



# Access Statement for Mead Open Farm Ltd

Last Reviewed 11<sup>th</sup> August 2021



This access statement does not contain personal opinions as to our suitability for those with access needs but aims to accurately describe the facilities and services that we offer all our guests/visitors.

## Introduction

Mead Open Farm is situated in the stunning countryside within half a mile of Billington, near Leighton Buzzard. The public attraction provides a safe, fun, and stimulating environment for families and groups. Mead

Open Farm aims to attract a wide range of visitors including members of the disabled community. The attraction is continuing to improve its facilities to welcome members of all abilities, and we strongly believe in maintaining high standards of customer care and visitor enjoyment.

Mead Open Farm has a variety of activities including animal barns, petting areas, grass paddocks, shop, picnic areas, the Sky Trail, Crazy Golf, outdoor play areas, and an indoor cafe and soft play zone. The attraction also brings in extra activities for various seasonal events throughout the year including Halloween Haunts with actors and Christmas Grotto. All activities are on ground floor level and members of staff are always available on site for assistance if needed.

Mead Open Farm is a member of the Visitor Attraction Quality Assurance Scheme. The attraction is designed to encourage wheelchair users and is therefore built on flat land with most of our paths and activities being accessible by wheelchair. All our animal activities, cafe and shop can be easily accessible by wheelchair; however, due to the physical nature of the Sky Trail and outdoor play areas these would likely be unsuitable. We look forward to welcoming you. If you have any queries or require any assistance, please email [info@meadopenfarm.co.uk](mailto:info@meadopenfarm.co.uk)

## **Pre-Arrival**

The best way to reach Mead Open Farm is by car. For full details and maps of how to reach us please see the directions section of our website. Unfortunately, due to the isolated location of Mead Open Farm, public bus services do not run to and from the attraction.

The nearest train station is Leighton Buzzard which is 4 miles away. Taxi services are available from the station, see contact details if you wish to book a taxi in advance.

The road leading up to the farm does not have any footpaths, therefore, may be a difficult route for walkers. At present, we do not have the facilities to provide hire out equipment that specifically meets the needs of those with visual or hearing

However, large print guides can be made available on request.

## Car Parking and Arrival

Free parking is available on site, and we currently have 13 spaces available for blue badge holders. These spaces are within 20 metres of the main entrance and on a flat tarmac surface. The rest of the car park is on level concrete terrain with light gravel in some parts and is well lit at night.



People can be dropped off right in front of the main entrance where there is concrete flooring with no kerbs or steps.

The entrance has a light manual door with an opening width of 800mm/31inches. A handrail is provided on entry to the ticketing office with a gentle ramp and a path width that is made accessible for wheelchair users.

### **Main Entrance, Reception and Ticketing Area**

The main entrance and ticket area is situated on the ground floor with hardwood level flooring and step free access.

There is limited seating in the main entrance outside the entry and exit.

The area is lit with fluorescent lights.

There is no low desk or glass screens, however, the low height of the desk makes it easy to serve wheelchair users.

There is no hearing loop system installed. However, our staff can provide a pad and paper.

There is a disabled and carer ticket scheme in place. We require visitors to provide a DLA, PIP or Blue badge on entry.

### **Signs and Communication**

The main forms of interpretation are informative animal signage around the barns and the paddocks. These signs have a large visible fonts.

Some pictograms are used where applicable.

There are also animal activity entertainers who provide animal demonstrations using a microphone. In some of the special seasonal events, there are actors for Halloween and Christmas who provide stories and entertainment.

Currently we do not provide translations or Braille.

Some of the special Halloween events do use flashing lights and have claustrophobic spaces.

The attraction provides many seating opportunities indoors and outdoors, in the form of wooden or plastic picnic benches.

All doors have a width of 800mm and are light manual doors or gates, all foot paths and barn flooring are hard level concrete with some lawn covered areas in the paddocks.

### Arrival Areas



## Public Toilets

Public toilets are in the indoor play barn by the cafe and the main block next to the shop and main entrance and exit: all toilets have level access, and all are situated on ground level excluding the external toilet block.

There is a unisex baby changing and accessible toilet located in the main shop and in the indoor play barn. The measurements of these toilets are as follows:

A light easy open manual door 900mm/35.5ins wide.

The toilet height is 400mm/15.7ins and the gap to the left is 800mm.

There are horizontal and vertical rails either side of the both basin and toilet.

The sink is 680mm in height with push-on taps.

There is fluorescent lighting and lino flooring

There is an emergency system in the Grainstore toilets

Our shop toilets are only open in busy periods, October half term.





Euans Guide in place



Low level basins



Standard toilet



Baby Changing



Shop disabled toilet





One of many handwashing facilities

24 inches from floor level



Outside toilets





## **Catering**

The cafe is situated on the ground floor with a step free level access and a gradual ramp on the entrance.

The entrance doors are 70 inches wide, and they are automatic

The area is well lit and has a level lino flooring.

There is a low self-service desk with staff always at hand to assist. Low desk 30 inches from floor. Standard desk 35 inches from floor.

Special dietary needs can be made available on request.

The nearest toilet is in the restaurant area.

An accessible lift is provided to access our first floor which consists of a small set of private party rooms for those visitors who have booked a party with us. Each room has tables and benches attached and individual chairs also.

## Entry



Wooden long tables suitable for wheelchairs with moveable benches.

28 inches from the floor

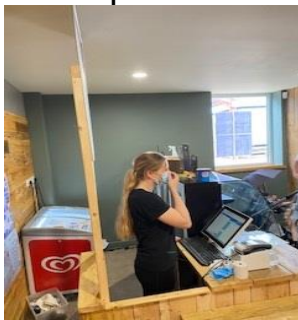


Bistro style Tables suitable for wheelchairs with moveable chairs

30 inches from the floor



Order point



Catering Overflow area and lift



## Play Area

This area is separate from the restaurant area and accesses the same toilets.

Entry ramp for play area



Entry doors for play area



Tables in play area

32 inches from the floor



Tables in the cafe are well spaced apart and have smooth plastic seating without arms.

## **Shop**

There is a shop on exit of the attraction that provides souvenirs and children's toys.

There are two sets of glass doors to the shop, both are 830mm/32.7ins wide and manual, they are usually kept open.

The shop has level wooden flooring throughout.

The shop has a spacious area with room for wheelchair users.

Staff are available to help if required.

Shop floor



## Animal Experience Areas

### Big Barn



### Big Barn Entrance



### Big Barn





Demo Barn



Demo barn floor



Piggy Palace Entrance





## Ramp to Piggy Palace



## Entrance to tractor ride



All our barns and indoor areas have suitable lighting.

## Grounds

There is a large grass area which contains the animals in the paddock: access to these paddocks is via large 1200mm width concrete paths and mown grass paths. Some pathways have light gravel which may be slightly uneven underfoot.

There is a picnic area on a level lawn which has wooden tables and attached benches.



Standard picnic bench. This is 32 inches from the floor



Shaggy's Off-Road Adventure



Entrance Gate



Cars



Shaggy's Cove



Jumping Pillows



Giants Rock Wall



Sky Trail



## Crazy Golf



## Go Karts



## Topsy Turvy



## Paddock Walk



## Textures and Surfaces

Play area surface



Pathways



Shop



Catering area



Toilet floors





Indoor play area



Grass



## **Camping**

Each summer we run a camping event that comprises of 40-60 pitches 10m squared. There are toilets and freshwater provisions. The activity is staffed 24 hours a day and covered by its own risk assessment.

## **Emergency Access**



Full width gates can be opened to allow access for emergency vehicles.

## **Additional Information**

We always have a first aid trained staff member on site to assist in an

emergency.

Clear large font signage is made available all around the attraction.

We welcome trained assistance dogs. A water bowl can be made available on request.

### **Contact Information**

Address (Inc postcode): Mead Open Farm, Stanbridge Road, Billington, Bedfordshire, LU7 9JH

Email: [info@meadopenfarm.co.uk](mailto:info@meadopenfarm.co.uk)

Website: [www.meadopenfarm.co.uk](http://www.meadopenfarm.co.uk)

Grid Reference: +51.894371, -0.620893

Hours of Operation: 10:00am-6:00pm daily, except Christmas Day, Boxing Day and New Year's Day

Local Accessible Taxi: AA Taxis located in Leighton Buzzard, contact number 01525 450 000